



THE IMPACT OF GLOBAL CRISIS ACCIDENTS ON THE PRICES DEVELOPMENT OF SELECTED RAW-WOOD ASSORTMENTS IN THE MIDDLE EUROPE REGION

Assoc. prof. Miloš Gejdoš, PhD.
Assoc. prof. Marek Potkány, PhD.

Technical University in Zvolen

15th International Scientific Conference WoodEMA 2022

CRISIS MANAGEMENT AND SAFETY FORESIGHT IN FOREST-BASED SECTOR AND SMES OPERATING IN THE GLOBAL ENVIRONMENT

01

Introduction

Crisis accidents in last 5 years

02

Methodology

Data collection and evaluation
Data sources

03

Results

Prices development for spruce and fir sawlogs
Prices development for beech sawlogs

04

Conclusion

CONTENTS

Introduction

- *Global climate change and increasing weather extremes are adversely affecting the stability of forest ecosystems and causing a high rate of incidental fellings.*
- *Global pandemic and its consequences on the implementation of forestry activities in the first half of 2020.*
- *The third negative event, which began to manifest itself at the turn of 2021/2022, was the instability in the energy market associated with rising fossil fuel and electricity prices. The ensuing war in Ukraine has exacerbated this instability and price growth.*



Methodology

- *The analyzed period represented the time range from 2017 to March 2022. The prices of assortments of spruce, fir, and beech sawlogs in selected federal states of Austria, Slovakia, and the Czech Republic were evaluated.*
- *Timber price data were obtained from available information sources and statistics. Austria - the HOLZKURIER magazine (2017-2022). Slovakia – the BULLETIN OF THE NATIONAL FOREST CENTER (2017-2022), Czech Republic - CZECH STATISTICAL OFFICE (2017-2022) in Forest Price Indexes. Wood prices are stated in Czech crowns, so for comparison purposes, they had to be converted into Euros at the average exchange rate of the CZECH NATIONAL BANK (2017-2022).*
- *For the complete methodological correctness of the price comparison, it is necessary to state that the individual quality subclasses of the assortment of sawlogs do not have the same technical requirements in individual countries within the technical conditions for the evaluation of the permitted range of negative qualitative features.*



HOLZKURIER.com

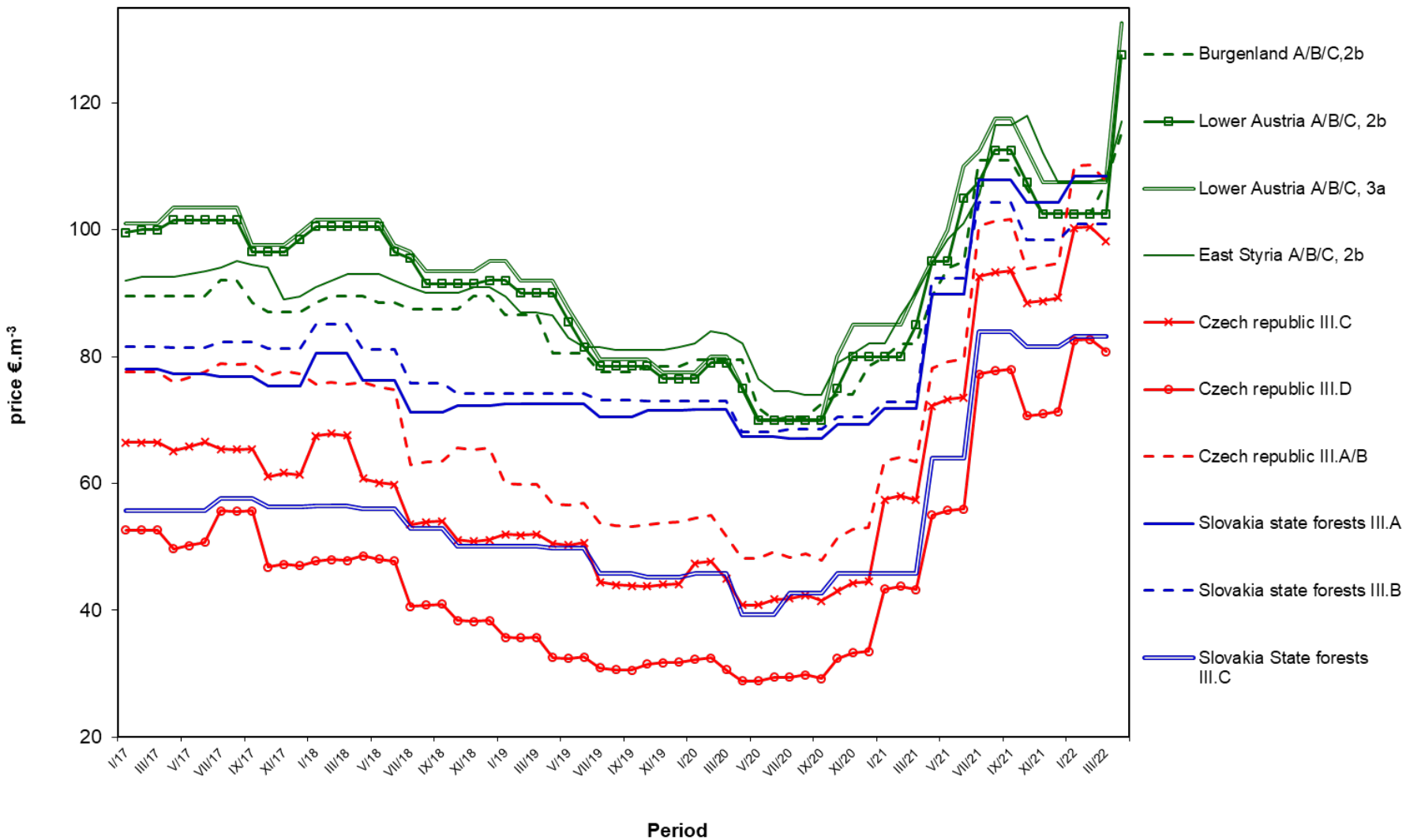
CZECH
STATISTICAL
OFFICE



CNB CZECH
NATIONAL BANK

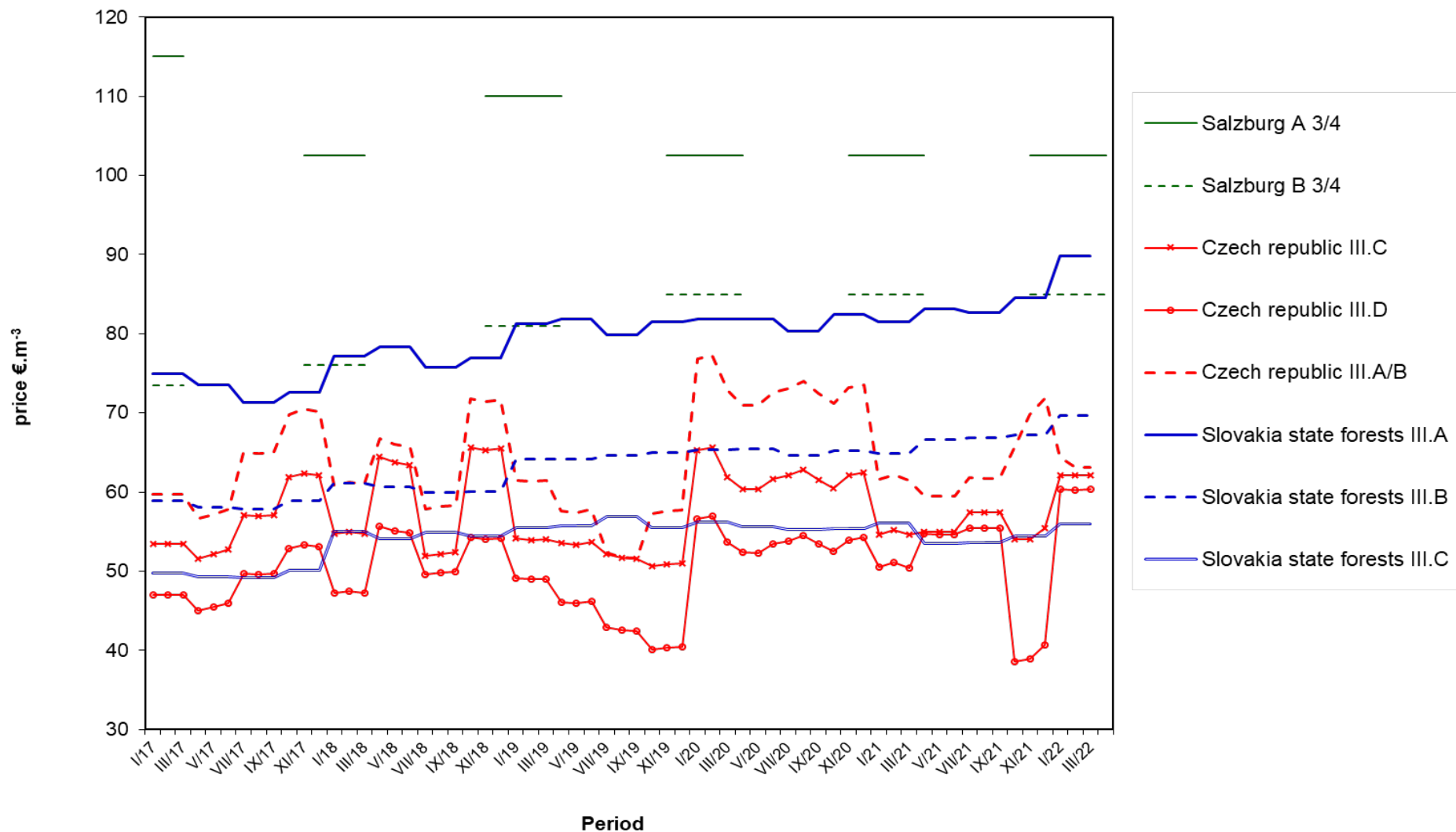


Results



Development of spruce and fir sawlogs prices from selected countries in $\text{€} \cdot \text{m}^{-3}$

Results



Development of beech sawlogs prices from selected countries in €/m³

Conclusion

- *There has been no similar situation in the last few decades. Consequently, this development also has a major impact on the trade with timber and timber products.*
- *Not only as an alternative to fossil fuels but also as a basic building material, wood has been an extremely popular commodity on the market over the last two years.*
- *Assortments that have lower long-term usability (including beech pillar logs) have not yet seen turbulent changes in price levels.*
- *Further developments in the timber market will be affected by the expected further construction development and the crisis in the energy market due to the war in Ukraine. If the current unfavorable situation does not escalate, a gradual, slowing of the market can be expected.*





THANK YOU!

Assoc. prof. Miloš Gejdoš, PhD.
Assoc. prof. Marek Potkány, PhD.

gejdos@tuzvo.sk
potkany@tuzvo.sk

Technical University in Zvolen
Department of Forest Harvesting, Logistics and Ameliorations,
Faculty of Forestry
Department of Economics, Management and Business,
Faculty of Wood Sciences and Technology