

Useful methods for diagnosing environmental conditions in the workplace in wood industry

**Prof. dr. Leon Oblak
University of Ljubljana, Biotehical Faculty,
Department of Wood Science and Technology
Ljubljana, Slovenia**

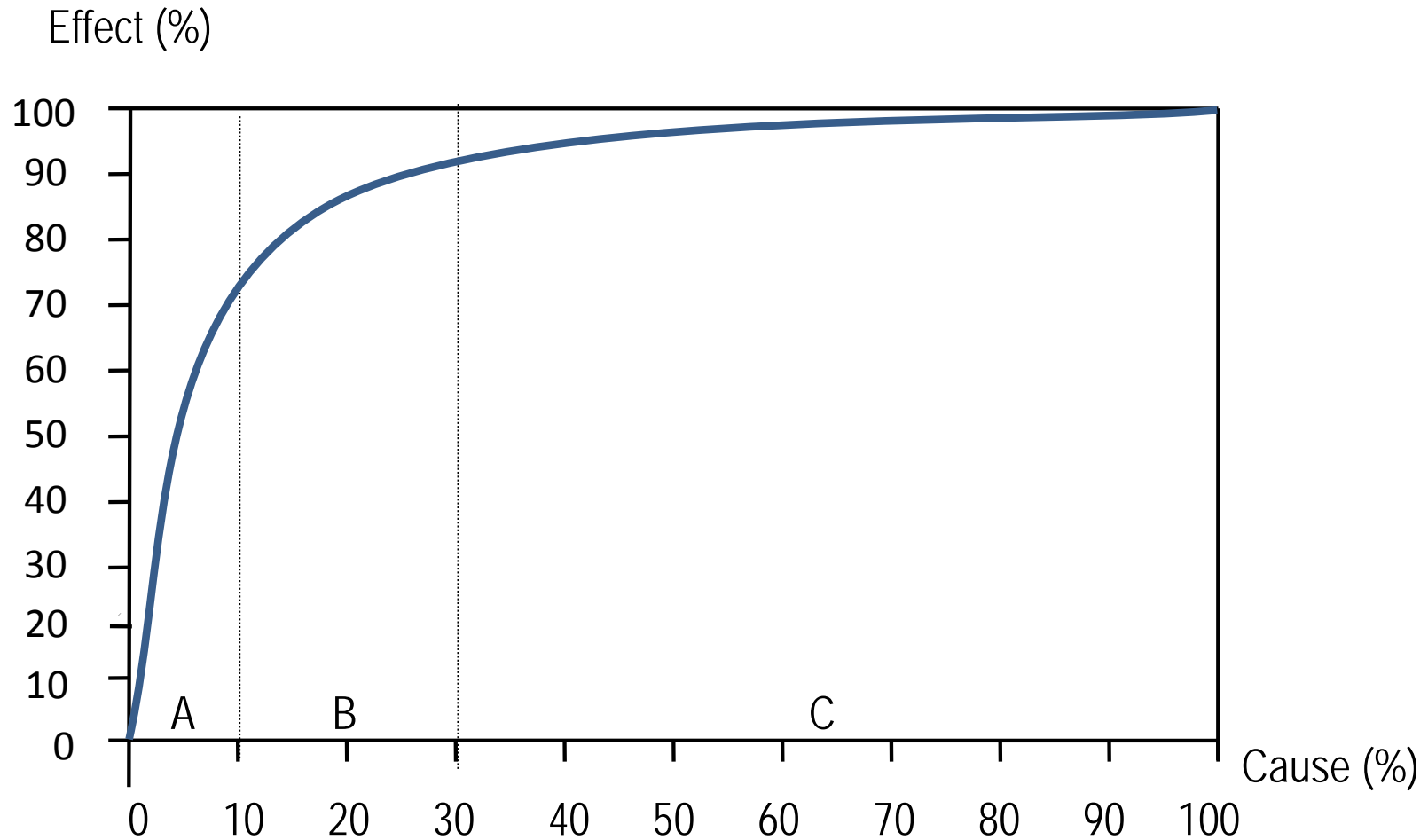
INTRODUCTION

This paper deals with two useful methods – ABC analysis and Multi-criteria decision-making method - that can be used to diagnose the environmental conditions in the workplace in wood industry.

METHODS

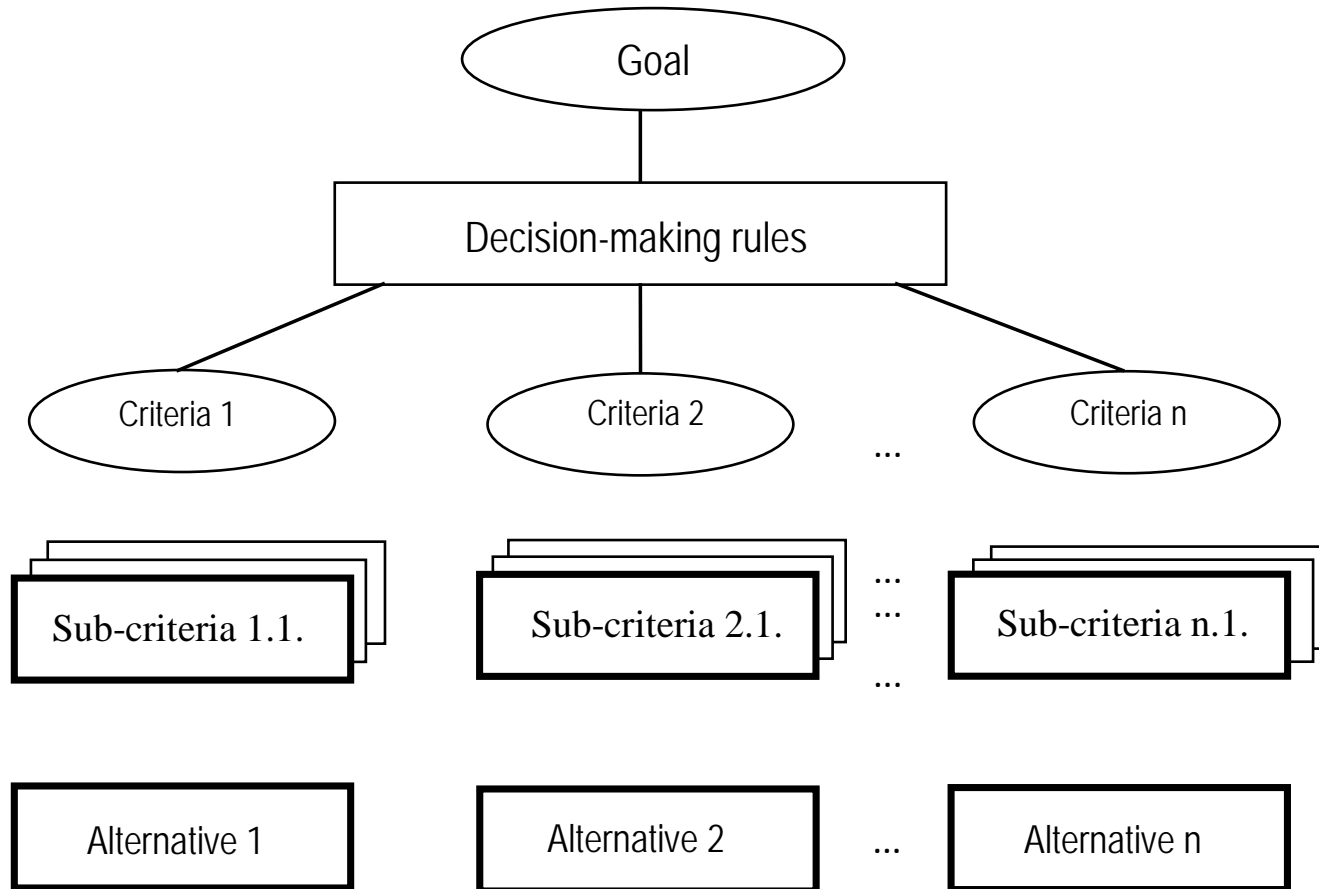
- **ABC analysis**
- **Multi-criteria decision-making method**

ABC analysis



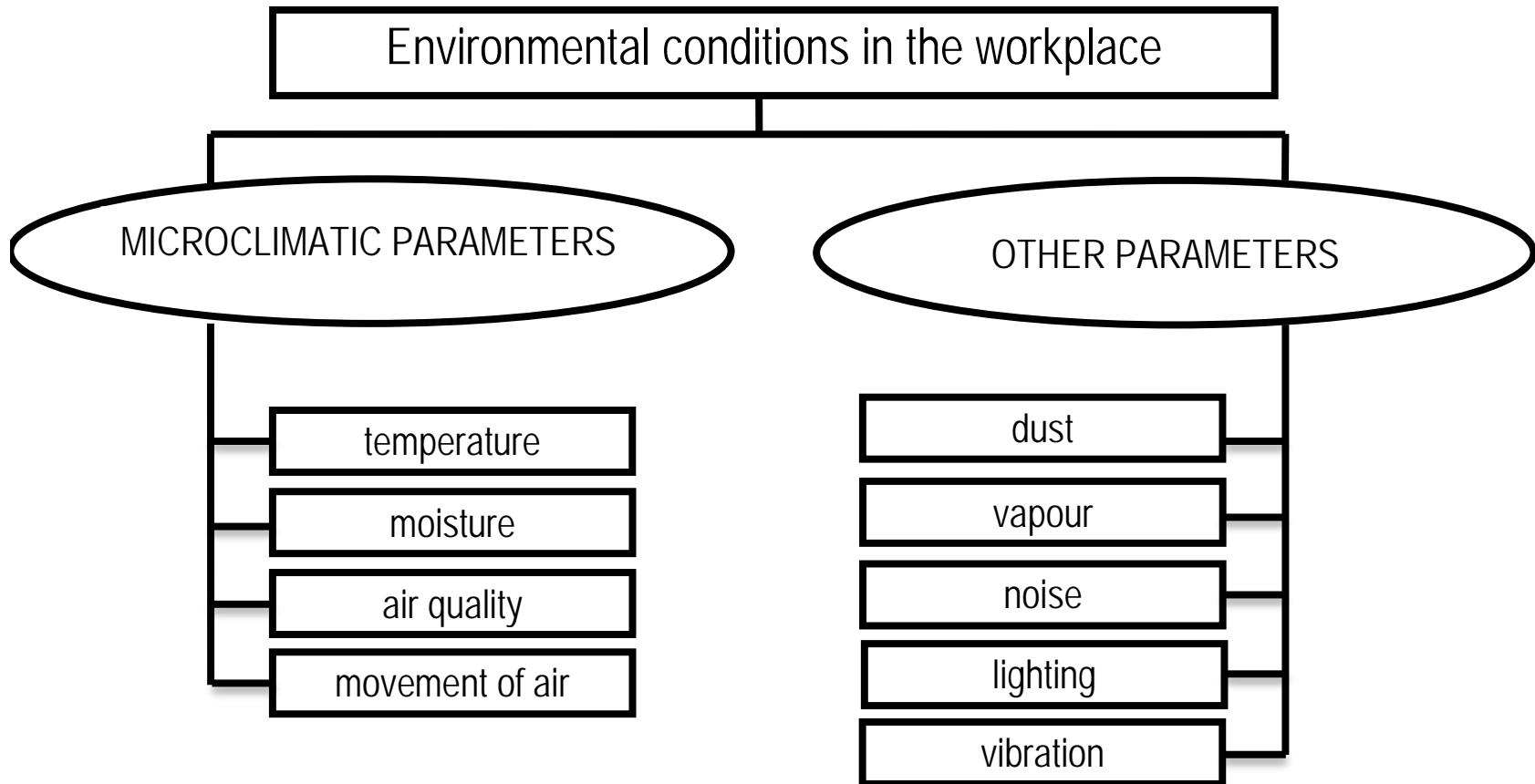
Relation of cause and effect according to the theory of ABC analysis

Multi-criteria decision-making method



Multi-criteria decision-making model

Methodology: the first step



A diagnostic tree used in determining the environmental conditions in the workplace in wood industry companies

Methodology: the second step

ENVIRONMENTAL PARAMETER	ABC analysis
temperature	A or B or C
moisture	A or B or C
quality of air	A or B or C
movement of air	A or B or C
dust	A or B or C
vapour	A or B or C
noise	A or B or C
lighting	A or B or C
vibration	A or B or C

Evaluation of individual environmental parameters

Methodology: the third step

	Microclimatic parameters	Other parameters	Environmental conditions in the workplace
1	A	A	unacceptable
2	A	B	unacceptable
3	A	C	unacceptable
4	B	A	unacceptable
5	B	B	bad
6	B	C	acceptable
7	C	A	unacceptable
8	C	B	acceptable
9	C	C	good

Decision-making rules for the top level of decision-making tree

CONCLUSION

